

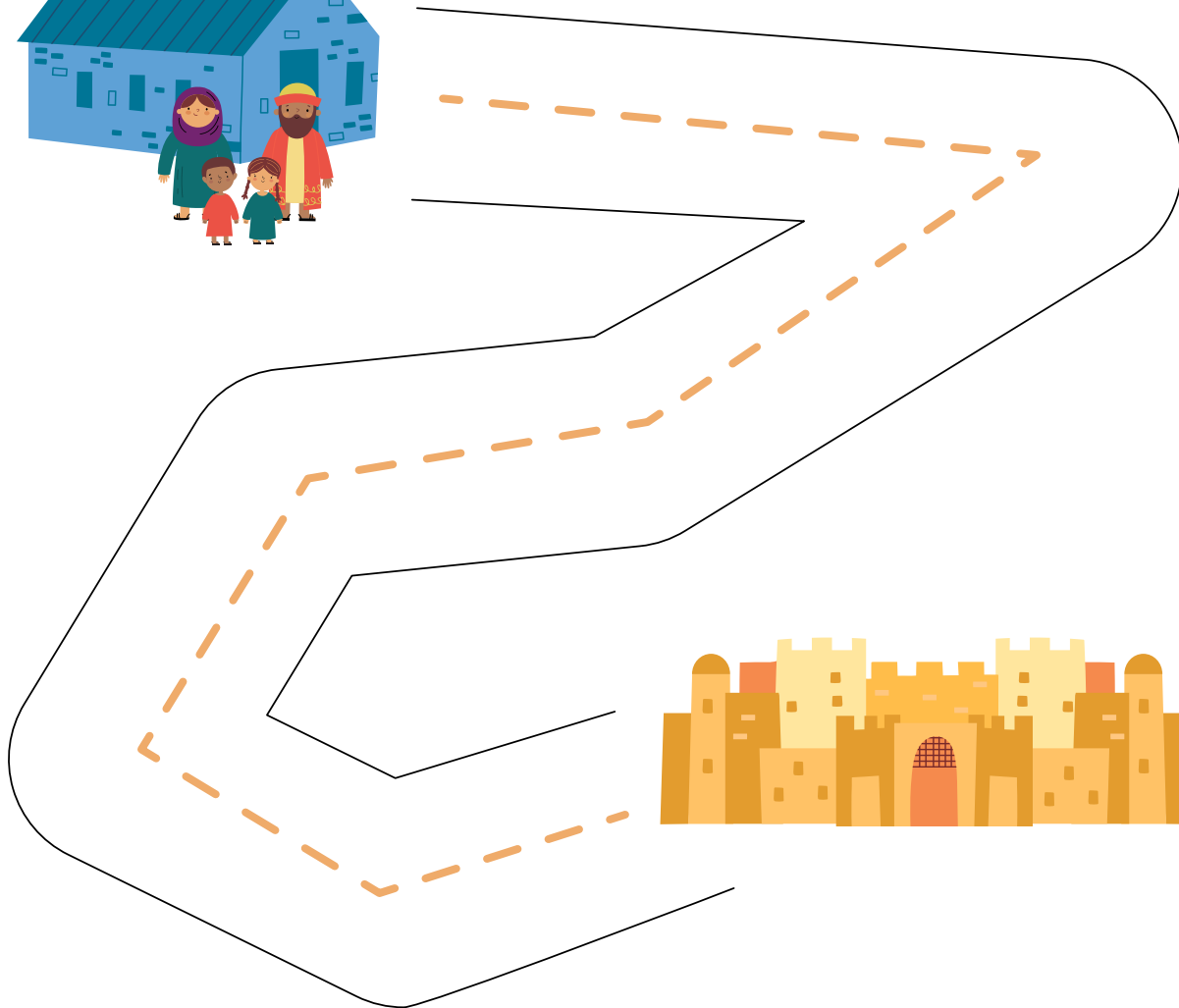
# JEREMIAH'S MESSAGE TO ISRAEL

JEREMIAH 29:1-14



# Find the Way Home

INSTRUCTIONS: Help the Israelites, God's people, find their way home.



He made us, and we are his—  
his people, the sheep of his pasture.

(Psalm 100:3b)

## Take It Home

ASK THESE QUESTIONS TO  
REVIEW TODAY'S SESSION WITH  
YOUR PRESCHOOLER:

- \* Today's Super Clue is a pillow. What does a pillow help us remember? *(A pillow is something you use to sleep comfortably. You use it where you live. A pillow reminds you that where you live is special to God.)*
- \* What is one thing you remember from today's Bible story?
- \* Where you live is special to God. Who were God's people that had to live in a place other than their home? *(Israelites)*
- \* What did you learn about God today?

### OUR BIG DEAL:

Head to Toe!  
God Made Me Special!

### TODAY WE LEARNED:

Where I Live Is Special to God  
Jeremiah's Message to Israel  
*(Jeremiah 29:1-14)*

### TALK ABOUT IT:

What friend or family member  
can you tell about what you  
learned today?