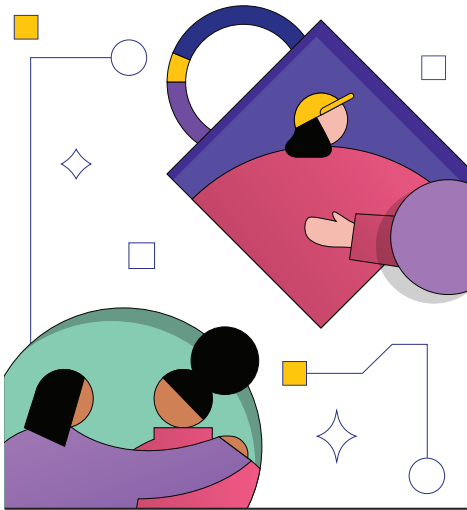




## Connected: Switch on the power of peace

Peace is proving you care more about each other than winning an argument.



### Talk About the Bible Story

Open the Bible together and read Genesis 13:5-18 or watch the video together on the Parent Cue app.

### Engagement Questions

- Is it easy to trust God with the end result? Why or why not?
- Why is it hard to give up what you think is fair?**
- Can you think of a time you chose to let something go rather than win the argument?

### Faith and Character Activity

Scan the QR code below for activities to guide kids at every phase to trust Jesus in a way that changes how they see God, themselves, and the rest of the world.

Scan the QR code to get started



### Prayer

“God, thank You for putting so many wonderful people in our lives. Show us how to treat them the way You want us to treat them. Help us to remember that it’s more important to make others feel cared for instead of getting what we want. And God, give us opportunities to practice peace this week. We love You and we pray these things in Jesus’ name. Amen.”

Weekly Parent Cues →

# Preteen

ENGAGE IN EVERYDAY MOMENTS TOGETHER



### Morning Time

As your kid starts their day, tell them about something you admire about them in the way they interact with others.



### Meal Time

At a meal this week, have everyone at the table answer this question: “Why is it hard to give up what you think is fair?”



### Drive Time

While on the go, ask your kid: “Is there someone you want to be friends with but you aren’t yet?”



### Bed Time

Pray for each other: “God, when life is unfair, help us to know when we should let it go and move on. Help us to value the person more than winning an argument.”

### More Ways to Engage with Your Kid

### Faith & Character Activities



### Worship Song of the Month



### Download the Parent Cue app

AVAILABLE FOR APPLE AND ANDROID DEVICES



### MEMORY VERSE

“If possible, live in peace with everyone. Do that as much as you can.”  
Romans 12:18, NIV